

## UPCOMING EVENTS

Sat Aug 22	WaterFire Cruise
Sat Aug 29	WPMC Picnic
Thu-Sun Sep 10-13	Watkins Glen Grand Prix
Sat Sep 19	Steel Museum Cruise
Sat Sep 26	Red Bandana Winery Cruise
Fri-Sun Oct 9-11	Strasburg Railroad Cruise
Sat Dec 5	WPMC Christmas Party

## WaterFire CRUISE BY RAY & BARB MCBRIDE

**T**he WaterFire cruise will be somewhat different than our conventional cruises. For people that like to sleep in, you will love the starting time - 2:00 PM Meet, 2:30 Leave. We will leave from the GetGo in the Quaker Valley Shopping Center on Ohio River Blvd Route 65 after lunch. We may drive a little faster then a little slower, but when we arrive in Sharon, Pa we will have an extremely unique experience called WaterFire. We will have reserve parking next to the main attractions, courtesy of the welcome center in Sharon.

**W**aterFire is a multi-sensory performance event created by Barnaby Evans in the mid 1990's as WaterFire Providence. It completely transformed a city, a community, and a people, and delivered a public art form that came to symbolize a city's effort to make the arts a major player in the revitalization of its downtown. WaterFire Providence's success has been well documented and its expansion to different venues around the world substantiates its place as one of the significant community art forms of our generation. Each day-long event offers music, food, and interactive arts experiences, all free of charge to the public. Actual WaterFire performances begin at dusk. Fire performers and other event entertainers add to the experience on, and around, the river, all accompanied by a very cool mix of live and recorded music. Please go to the following link for additional information [www.waterfiresharonpa.org](http://www.waterfiresharonpa.org). After the experience is complete, you will be on your own to find your favorite ice cream treat

**T**his cruise is rated Leisurely to Sporty to Leisurely.

**D**ate & Time: Saturday, August 22 , 2015. Meet at 2:00 pm and leave around 2:30 pm

**M**eeting Place: GetGo, 8 Quaker Valley Shopping Center, Leetsdale, PA, next to Quaker Valley HS on Ohio River Blvd - Route 65

**R**svp: [raynbarb@comcast.net](mailto:raynbarb@comcast.net) or Ray's cell 4126078078

## Celebrating 25 Years



## WPMC and The MX-5





# THE FUN 'N' THE SUN TIMES

## WPMC 2015 Annual Picnic (Last chance!) BY LARRY PIETROPAOLI

**T**he WPMC annual picnic is almost here. Mark your calendars for August 29, 2015 at the White Oak Park in the Maple Grove pavilion from 11:00 am to 4:00 pm. Reservations are required and your food contribution must be included to limit duplications. As always, we will supply burgers & dogs, soft drinks, condiments, and plates. Requested food contribution categories are snacks, salads, veggie dishes, and a covered dish.

**P**lease RSVP by August 21 (we need to buy enough burgers, soda, etc.) with your food contribution at larrydep@msn.com. Don't forget the price: zero, as always.

**D**irections to White Oak Park: From Pittsburgh via Parkway East, exit at Forest Hills onto Ardmore Blvd (Rt 30E) to Carpenters Lane (at Sheetz), turn right on Carpenters Lane 1.4 mi, then right into park. Follow route for 1 mile to Maple Grove pavilion on right.

See you there!

## WATKINS GLEN GRAND PRIX FESTIVAL

BY JOE & LINDA ZIMLIKI

**W**e had 9 cars respond positive to participate in the Grand Prix Festival. Mazda was named the Marque Car. The registration is for the Chateau Lafayette Reneau Winery Tour de Marque - Mazda @ \$100 which is for the Marque. Plans are still being developed. So far, the fee includes 2 or 3 laps on the old course, special parking downtown, lunch, and road rally. The committee is planning activities for late afternoon and evening with grand finale fireworks. Saturday and Sunday will offer a variety of vehicular activities to encourage Festival participants to take the time to explore and enjoy the region. There are many projects in the works that will include lots of motor-head and non motor-head activities. There will be meals, deals, and more.

**T**he number of Mazdas for Tour de Marque is limited so if you plan on joining us, please let me know so I can place you on their list. I have secured a hotel for 3 nights at \$67.46 per night and have 12 rooms.

**R**svp: izimliki@westpennmiataclub.com or 724-327-1762

## HAVE YOU EVER BEEN IN A STEEL MILL? BY PAT & LARRY PIETROPAOLI

**W**ell, this is Pittsburgh and you have mill artifacts everywhere. But, what do they do? Have you ever been in a steel mill to see them? For some of us, our work took us to one of the most amazing places on earth. They were big. They were noisy. They were dangerous. They were exciting. They were the envy of the world. And they made the stuff that made America, won our wars, took us to the moon, and made our economy the envy of the world. So, once again, have you ever been in a steel mill? If your answer is no, or you need a nostalgia fix, come join us on September 19 for a trip to the Youngstown Historical Center of Industry and Labor, Youngstown Ohio for a guided tour of a museum dedicated to showing you what it was really like. We will leave from the 7-11 on route 19 & Boundary Road just south of Zelenople, travel some hidden gems in Beaver and Lawrence counties, and arrive 55 miles later in Youngstown for a special guided showing. Our cruises are "leisurely" and include the required lunch, country ice cream shop, and return home before dark.

**C**ruise limited to 14 additional cars

**M**eet at 9:00 AM; Leave 9:30 AM

**C**osts: Museum - \$7.00. Restaurant is "Cash Only," no credit cards. Most lunch entries are \$6-9

**R**eservations due by September 14 to larrydep@msn.com

**A**re you in????????????? Then bring your hard hats.





# THE FUN 'N' THE SUN TIMES

## RED BANDANA WINERY CRUISE

BY WALLY & SHERRY SWARMER

**P**lease join us for a leisurely cruise to the rustic Red Bandana Winery in Leeper, PA (near Tionesta) on Saturday, Sept 26. We will meet at the Sheetz on Rt 8, 2 miles south of Butler (249 Pittsburgh Rd, Butler, PA 16002, across from Baglier Buick, GMC Dealership) at 9:00 and leave at 9:30. We will spend about an hour at the winery, then off to lunch around 1:00. Return will be by way of Kittanning, arriving there about 4:00 where we will make our traditional ice cream stop. From there we can make our way home. RSVP to (swarmerws@yahoo.com) or call at 724 443 0834.

## STRASBURG TRAIN & AMISH COUNTRYSIDE



BY JOE & LINDA ZIMLIKI

**T**he third weekend cruise will be our annual train trip. This year we'll go to Strasburg, Pa. It will be a fun filled three day weekend. We will be visiting such towns as Intercourse, Paradise, Bird In Hand & Strasburg while cruising the Amish countryside and catching sight of some Covered Bridges. A family style Amish dinner with all the trimmings is also included. We'll shop at Amish stores and ride America's Oldest Short Line Railroad, the Strasburg Train and visit the associated museum. The trains are pulled by steam engines.

**I** am advertising this cruise early because the rooms will be released in August. October is a very busy time of year for this area. When I started planning this cruise in March,

I had very hard time finding a hotel. The majority were already full. There will be two different areas at the hotel, the Main building, which has an elevator, and the Annex, which doesn't have an elevator, at two different prices. Only 10 rooms in the Main building and 6 in the Annex were available in March. Hotel information will be given out once you sign up. This cruise is limited to 16 cars. The train and museum have to be prepaid. Information follows. Please take note of the deadline.

**D**ate & Time: Oct 9, 2015 - Meet at 7:30 AM and leave at 8:00 AM sharp

**P**lace: Mount Laurel Plaza - near K-Mart & Get Go - Rt 30 in Latrobe, Pa

**H**otel Rates: Main - \$125.99 + taxes, Annex - \$ 98.99 + taxes

**T**rain Ride Rates: \$12.50 per person

**T**rain Museum Rates: \$12.00 per person

**R**svp: By August 5 to Linda Zimliki at [lizimliki@westpennmiatalub.com](mailto:lizimliki@westpennmiatalub.com) or 724-327-1762

## CRUISE TYPES

**L**EISURE - A NICE DRIVE WHERE YOU WILL BE ABLE TO ENJOY THE COUNTRY SIDE - COMBINATION OF BELOW SPEED LIMIT & AT SPEED LIMIT

**S**PORTY - A SPEEDIER RIDE SO YOU CAN ENJOY THOSE CURVES - AT SPEED LIMIT

**Z**OOMIN - YOUR MIATA WILL BE MOVIN THROUGH A LOT OF CURVES WITH SPIRITED DRIVING





# THE FUN 'N' THE SUN TIMES

## BEAVER AND THE EAGLE CRUISE REPORT BY DENNIS & RUTHANN WEBER

**I**t was a beautiful cool and clear Saturday morning in Cranberry. We were welcomed by our hosts for the day, Candy and Jerry Spehar. Candy was busy handing out "beavers" to each car's navigator. We liked them so much we brought ours home with us! At 9:00 AM we headed West on some great "Miata" roads in Beaver County, smooth, curvy and challenging. We arrived in Beaver to enjoy the Beaver Area Heritage Museum and log house. The interesting museum was housed in a 90 year old Train Station once owned by the P&LE railroad. Also a one room log cabin was built circa 1802 now surrounded by native grasses, wild flowers and herbs, and furnished in period household furniture. The zooming resumed around 11:00 AM and headed West through West Virginia arriving at the Spread Eagle Tavern & Inn in Hanover Ohio. Arriving at the inn, we stepped back in time to 1837 in the structure Will Rhodes had built to lodge and feed travelers using the Sandy and Beaver Canal. After a great meal we toured the inn's three floors, eleven rooms, and twelve fire places. No one stayed overnight in the rooms costing up to \$500 per night. John and Shar had a deflating experience and left the cruise early. John reports the pressure is back to normal.

## ROCK & ROLL MIGHTY THREE BY JOE & LINDA ZIMLIKI

**T**he mighty three met in Grove City to start our journey to Cleveland. Mike gave us instructions for the cruise. We lined up with Mike & Sandy as leader, Dave & Irina as middle car and Joe & Linda as the sweep. It was Irina's first time as the relay radio person. She did a great job. Then we were zoomin the country twisty roads to our destination. It wasn't a beautiful day, but a gorgeous day. There was no rain and not a cloud in the sky. We stopped at Mosquito Lake State Park for a rest break. It was a beautiful spot. Once we were back on the road, we saw Amish buggy after Amish buggy. I have never seen so many Amish buggies in my life, not

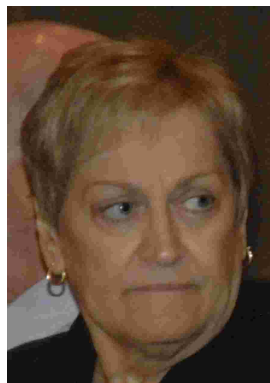
even in Lancaster.

**T**he mighty three stopped for lunch at a plaza restaurant before heading to the Rock N Roll Hall of Fame. The flowers in front of the restaurant were absolutely beautiful. Check it out in the event photos. We ate at B Spot and had one of their inventive hamburgers. The group agreed they were some of the best burgers we ever had.

**I**t was time to brave downtown Cleveland to the Rock N Roll Hall of Fame on the Lake. There was a lot to see. It showed the roots of rock n roll and the artists responsible for evolving music. So many greats starting with "The King" and going on and on - too many to name. After seeing everything, we were zoomin again to our ice cream stop then home.

**T**he sunny day was filled with fun, laughter, memories and some great music. Thanks Sandy and Mike for a great day.

## RIP BARB SHOCKLING



BY LINDA ZIMLIKI

**B**arb Shockling, a member of our Miata family, passed away July 22 after a long fight with breast cancer. Her son, daughter, and husband Larry were at her side. I didn't know Barb as well as other members but what I do know is she was a warm and gracious lady. Our condolences to Larry and his family.





# THE FUN 'N' THE SUN TIMES

## 2015 CRUISIN & ZOOMIN SEASON

BY LINDA ZIMLIKI

**T**his has been a crazy summer with weather but members haven't let it deter them from cruisin. We have some great cruises on the schedule for the upcoming months. The Waterfire Cruise is a different cruise which I'm anticipating. The cruise will start later in the day and go into the evening. Our annual picnic is August 29 where we will be celebrating the club's and the Miata's 25th Anniversary. We had great attendance for the PVGP. There were approximately 50 Miatas. Members bought food to share and old friends stopped by our tent to say Hi. The WPMC Store had a good day selling 9 shirts.

**T**here is another regional event for 2016. The Utah Miata Club is hosting "Miata Mountain Getaway with Life Elevated" from June 22-25, 2016. Registration fee is \$125 per person until Dec 31, 2015 and \$145 thereafter. Hotels are The Chateaux and Lodges at Deer Valley. Rooms start at \$149 per night for The Chateaux and \$137 per night at The Lodges. More details are on their websites. Deer Valley is in Park City, Utah. Registration is open now and you can also book your rooms. Links for both are below. There will also be a link on our Events page under "Other Miata Events".

### Event & Registration -

<http://www.utahmiataclub.org/#!/mountaingetaway/cwrq>

**L**inks for Booking Rooms: The Chateaux, Deer Valley: [http://www.reseze.net/cassets/mkt/stein\\_eriksen/landingpages/Utah\\_Miata\\_Club.html](http://www.reseze.net/cassets/mkt/stein_eriksen/landingpages/Utah_Miata_Club.html) and [www.the-chateaux.com](http://www.the-chateaux.com) and [www.deervalley.com](http://www.deervalley.com).

**T**he Chateaux: Phone 877-288-2978. The Lodges at Deer Valley: Phone 800- 424-3337

**C**heck out the Miata.net Forum on events for the Southwest Region for this event or the "Miatas in Utah Facebook" page which is dedicated to this event.

**Z**oom Zoomm Zoommm



## TOP DOWN ADVENTURES BY MIKE BUTLER, PRESIDENT

**H**appy 25th Anniversary to Mazda Miata and our West Penn Miata Club! For the 25th Anniversary, Mazda has introduced the new fourth generation MX5 ND. It's an enthusiast roadster in its purest form. The 2016 MX5 ND has been completely re-engineered with a new body style, lower center of gravity, less weight, as well as a 2.0 liter Skyactiv four cylinder direct injected engine. All key ingredients for the kind of driving we expect. With plenty of zoom-zoomin', the new fourth generation is beginning to make its debut in some local dealerships. The West Penn Miata Club is also celebrating our 25th Anniversary. Over the years, there have been many wonderful cruises, get togethers, picnics and Christmas parties along with a lot of "Top Down Adventure" memories and friendships that will last a lifetime.

**S**pend the day celebrating the West Penn Miata Club's 25th anniversary at our annual picnic on August 29th at White Oak Park. This is a time to enjoy great food, fun games, and laughter with friends. Hope to see you there!

**O**ther notable 25th Anniversaries include The Hubble Space Telescope, The Apple Macintosh Classic, Adobe Photoshop, Microsoft PowerPoint, and the Americans with Disabilities Act.

**I**f you're visiting this site just to check us out, Welcome! I hope you'll join us for an event this year so you can learn more about us.

**G**et ready, get set, ZOOM!

## SEPTEMBER DEADLINE

THE DEADLINE FOR ARTICLES FOR THE  
SEPTEMBER NEWSLETTER IS SEPTEMBER  
5, 2015





## OFFICERS

Founder: Paul Fronko	
President: Mike Butler	(412) 498-0962
Vice President: Tom Sertik	(724) 941-6418
Treasurer: Vera DeMatteis	(724) 962-2217
Secretary: Mike Leone	(724) 554-9544
Events Chair: Linda Zimliki	(724) 327-1762
Past President: Larry Pietropaoli	(724) 869-9405

e-mail: | [wpmc@westpennmiataclub.com](mailto:wpmc@westpennmiataclub.com)  
 web site: | <http://www.westpennmiataclub.com>



Editor - In - Chief:  
Steve Lapp




Send all editorial contributions to:

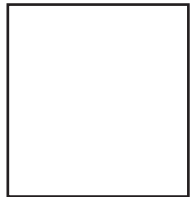
WEST PENN MIATA CLUB  
 c/o Steve Lapp  
 105 Gadshill Place  
 Pittsburgh, PA 15237  
 e-mail: [slapp@westpennmiataclub.com](mailto:slapp@westpennmiataclub.com)

## Legalese

**T**he FUN 'N' THE SUN TIMES is published as a service by the West Penn Miata Club, Inc. – a non-profit corporation.

**T**he WEST PENN MIATA CLUB assumes no liability for any information contained herein; or injury or damage resulting from the use of this information. The ideas, maintenance, opinions, or modification tips expressed are to be used at the readers' discretion. Individual contributors and/or editors express no approval, authentication, or endorsement.

WEST PENN MIATA CLUB  
 c/o Mike Leone   
 1216 Morgan Road  
 Bridgeville, PA 15017



*Address goes here*

